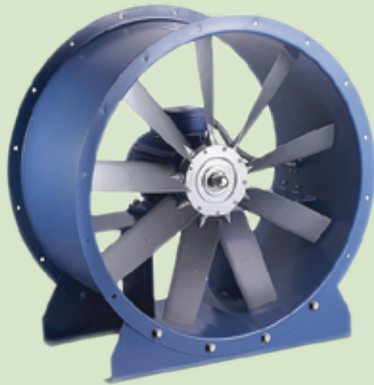




Innovation leads to value

# Catalogue for Ventilation Equipment



**HRG ENVIRONMENTAL ENGINEERING**  
(Ventilation Equipment Division)



# Company Profile



## HRG ENVIRONMENTAL ENGINEERING

### About Us

HRG ENVIRONMENTAL ENGINEERING (HRGEE) is a leading importer and supplier of Material Handling Equipment, Caster Wheel and Ventilation Equipment since 2008. We work with world famous manufacturers such as NOBLELIFT, YL CASTER, POPULA and FLYTURN to provide high quality products and services. We have a proven track record of success and customer satisfaction by providing quality products and after-sales service. Our skilled and experienced engineers and technicians provide you with the best product selection and service, with utmost sincerity and care.

### We Represent The Following Brand



**POPULA GROUP CO., LTD.**

Manufacturer of Ventilation System and Equipment in Foshan, Guangdong, China. Since 1996



**QINGZHOU FEITENG THERMO-CONTROL MACHINERY CO., LTD.**

Manufacturer of Ventilation System and Equipment in Qingzhou, Shandong, China. Since 2011

### Some of Our Valued Customers



## Drop Hammer Exhaust Fan



### Features:

Specially thick galvanized layer with extremely strong anti-corrosive ability body material, special high intensity alloying wheel, Newly twisted punch press stainless steel blades, reasonable blade angle and achieve the biggest air volume. High precision microcomputer aided manufactured system can makesure fans maximize efficiency, low power consumption & low noise.

### Application:

This type of Exhaust Fan is applicable all high temperature areas such as Textile Factory, Garments Factory, Sweater Factory, Chemical Factory, Shops, Super Markets, Hospitals, Stations, Hall, Meeting-Room, Schools, Workshops, Mosque etc.

Model	Dimensions (LxWxT) mm	Air Flow m <sup>3</sup> /h	Fan Dia Ø mm	Speed rpm	Power/Voltage /Frequency kW/V/Hz	Pressure Approx. Pa	Noise Approx. dB	Blade & Shutter Material	Body Material
DHE - 1	620X620X400	10000	500	1400	0.37/380/50	55	≤ 70	Stainless Steel	Galvanized Steel
DHE - 2	900X900X400	28000	750	630	0.55/380/50	65			
DHE- 3	1060X1060X400	33000	990	600	0.75/380/50	70			
DHE- 4	1220X1220X400	38000	1100	460	0.75/380/50	73			
DHE - 5	1380X1380X400	44000	1250	439	1.1/380/50	56			

Can be customized apart from the data directed in the table.

## Evaporative Cooling Pad



### Working Process:

There is one layer of thin water film on the surface of corrugated fiber paper, when the outside hot air passed through the paper, water on the thin film will absorb heat in the air and then evaporate into vapor and the cool air can enter the room. This process seems the wind blowing the surface of the water.

### Features:

1. Spatial crossing linking technology
2. High absorbability
3. High water resistant
4. Anti mildew and long service life
5. Stainless Steel/Aluminium Frame

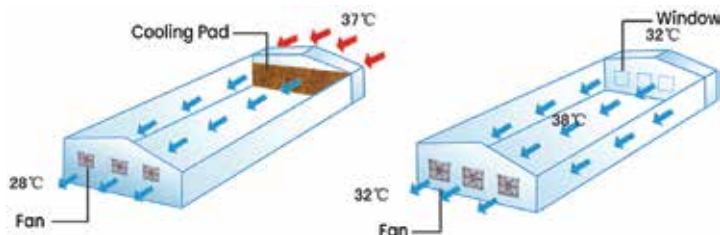
### Application:

To reduce temperature, dust and insect of different types of factories like Textile, Garments, Sweaters, Glass and Chemical etc.

### Available Size:

H x W x D (mm): 1800 x 600 x 150

Size Can Be Customized



## FRP Roof Top Exhaust Fan



### Product Feature:

Specially thick FRP body material, high intensity alloy aluminum fan blades with reasonable blade angle achieve the biggest air volume. High precision microcomputer aided manufactured system can make sure fans maximize efficiency, low power consumption & low noise.

### Application:

This product is widely used in medicine, petroleum, chemical, textile, electronics, light industry, food, metallurgy and power generation industries and various civil ventilation series etc.

Model	Air Flow m <sup>3</sup> /h	Fan Dia Ø mm	Speed rpm	Power/Voltage /Frequency kW/V/Hz	Pressure Approx. Pa	Noise Approx. dB	Weight Approx. kg	Propeller & Blade Material	Body Material
FRTE-1	15000	600	1400	1.5/380/50	232	≤73	57	Alloy Aluminium	FRP
FRTE-2	27000	800	960	2.2/380/50	175	≤72	124		
FRTE-3	46000	1000	720	03/380/50	141	≤76	216		
FRTE-4	44000	1220	700	1.5/380/50	70	≤74	90		

## FRP Trumpet / Cone Fan



### Product Feature:

1. Cone design, better exhaust, large air volume, strong draft, stable, horn-shaped, maintenance-free. No belt replacement.
2. Imported bearing, high strength, lower noise and long service life.
3. PVC/Aluminum shutters/blinds. Oxidation-proof, light, no-deform, flexible, anti-backflow. No electricity or switch for open/close.

### Product Applications:

For hot & smelly workshops: e.g. heat treatment, casting, plastics, aluminum, shoe, leather, electroplating, chemical, animal husbandry, greenhouse, industrial plants etc.

Model	Dimensions (LxWxT) mm	Air Flow m <sup>3</sup> /h	Fan Dia Ø mm	Speed rpm	Power/Voltage /Frequency kW/V/Hz	Pressure Approx. Pa	Noise Approx. dB	Blade & Shutter Material	
FT-1	560X560X450	8000	350	950	0.37/380/50	65	≤ 70	FRP	
FT-2	660X660X450	10000	450	950	0.37/380/50	75			
FT-3	850X850X480	15000	650	700	0.37/380/50	80			
FT-4	1060X1060X510	30000	850	520	0.55/380/50	85			≤ 68
FT-5	1260X1260X560	40000	1050	520	0.75/380/50	95			≤ 68
FT-6	1460X1460X580	52000	1250	520	1.1/380/50	95			≤ 65

## Evaporative Air Cooler



### Description:

Evaporative cooler is a device that uses water evaporation to cool air. It is different from air conditioning systems that use refrigeration cycles. Evaporative cooler uses less energy than air conditioning and adds more moisture to the air in dry climates. It is suitable for places like internet cafes, base station, factory, supermarket etc.

### Advantages:

1. 100% new update PP cabinet, anti-UV, anti-corrosion, anti-aging, anti-deformation.
2. Efficient cooling system and easy to clean.
3. Open type water distributor, smooth water flow and not easy to jam.
4. Aluminum material motor cabinet, 100% copper wire for longer life.
5. Automatic water inlet system.

Model	EAC-18	EAC-22	EAC-30
Airflow	18,000 m <sup>3</sup> /hr	22,000 m <sup>3</sup> /hr	30,000 m <sup>3</sup> /hr
Covering Area	100-150 m <sup>2</sup>	180-220 m <sup>2</sup>	250-300 m <sup>2</sup>
Fan Type	Axial		
Motor Power	1.1 kW, 380V, 50Hz	02 kW, 380V, 50Hz	03 kW, 380V, 50Hz
Noise Level	56-71 dB	56-71 dB	56-71 dB
Available Air Discharge	Bottom/Side/Upper		
Water Consumption	20-25 L/H	25-30 L/H	25-30 L/H
Water Tank	30 Liter	40 Liter	50 Liter
Dimension	1100x1100x950 mm	1100x1100x950 mm	1200x1200x1200 mm
Weight	77 kg	120 kg	125 kg

## Industrial High Speed Wall Hanging Fan



### Description:

Featured by steady operation, large air volume, low noise, nice outlook, and optimized blade structure. It is widely used for ventilation and sunstroke prevention in mineral workshops, warehouses, etc.

Model	Fan Dia Ø mm	Power kW	Voltage V	Speed rpm	Air Flow m <sup>3</sup> /h
IHSWH-1	450	0.09	220	1280	7600
IHSWH-2	500	0.12	220/380	1390	9000
IHSWH-3	650	0.20		1400	12000
IHSWH-4	750	0.25		18000	

Can be customized apart from the data directed in the table.

## Axial Flow Fan



### Features:

Specially thick mild steel with hammer painting of body material, high intensity alloy aluminium propeller mild steel blades with reasonable blade angle achieve the biggest air volume. High precision microcomputer aided manufactured system can make sure fans maximize efficiency, low power consumption & low noise.

### Application:

Power Station, for loop control system of the large engineering in subway, tunnel etc.

Also can be customized apart from directed in the table.

Model	Air Flow m <sup>3</sup> /h	Speed rpm	Power/Voltage /Frequency kW/V/Hz	Pressure Approx. Pa	Noise Approx. dB	Weight Approx. kg	Propeller Material	Body & Blade Material
AF-1	12000	1400	2.2/380/50	±250	≤70	78	Alloy Aluminium	Mild Steel (MS)
AF-2	22000		04/380/50		≤70	85		
AF-3	30000	960	5.5/380/50		≤72	130		
AF-4	45000		7.5/380/50		≤73	165		
AF-5	55000		11/380/50		≤75	202		
AF-6	75000		15/380/50		≤76	220		

Can be customized apart from the data directed in the table.

## Centrifugal Type Fan

### Low/Medium/High Pressure Type Centrifugal Fan



This product is widely used in General Ventilation of high building, factories, tunnel, mining enterprises restaurant, departmental store, pneumatic compression facilities, industrial boilers, ventilating air conditioner, purifier, glass, electroplating, etc.

**Air volume** : 1,131 – 75,552 m<sup>3</sup>/hr.  
**Air pressure** : 198 – 31,43 Pa  
**Motor Drive** : Direct Driven

### Dust Extraction Type Centrifugal Fan



It is suitable to expel air with dirt, wood scraps and fine fiber. It can also be used for ventilation with the temperature of air below 80 Made up of 6 forward curved blades, the fan is not easy to wear and amass dirt.

**Air volume** : 1,120 – 69,347 m<sup>3</sup>/hr.  
**Air pressure** : 520 – 3,874 Pa  
**Motor Drive** : Belt / Direct

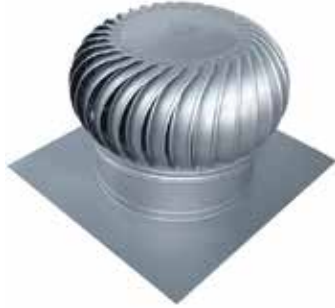
### Explosion Proof Type FRP Centrifugal Fan



This fan is a new anti-corrosion fan made of polyester fiberglass. It is strong, light, corrosion-resistant, not easy to age, and quiet. The impeller is water or oil cooled. This reduces the motor's corrosion, speed, load and fan's lifespan.

**Air volume** : 600 – 1,05,686 m<sup>3</sup>/hr.  
**Air pressure** : 290 – 2,990 Pa  
**Motor Drive** : Belt Driven

## Automatic Roof Ventilator



A non electric alternative to ventilation, these vents use the natural force of wind and air pressure to spin and vent out stale attic air.

**Bottom Diameter** : 500 & 600 mm  
**Body Material** : Stainless Steel(SS)  
**Base Material** : Color-coated sheet

## High Volume Low Speed (HVLS) Fan



HVLS fans are large ceiling fans that move large volume of air at low rotational speed. They can enhance the cooling effect and temperature distribution at low cost and energy. They are used in industrial and commercial places like warehouse, mall and airport.

**Available Fan Diameter** : 4.9 – 7.3 m  
**Air Volume** : 11,500 – 14,800 m<sup>3</sup>/hr

## Chiller Condenser Cooling Fan



The fan blade has an aerodynamic and efficient design with a balanced rotor and a corrosion-resistant surface. The fan has single-phase or three-phase motors, with various voltage options and water-proof junction boxes.

**Fan Diameter** : 200 mm - 800 mm  
**Operating Temperature** : -25°C to +60°C  
**Material** : Cold Rolled Steel

## Standard/Luxury Square Fan



Features low energy usage despite having large volume and noise <56 dB. Our luxury model has a high-strength metal axial-flow fan with anti-rust spray paint and a quality motor. Suitable for factories, malls, offices, etc.

**Size** : 10" - 24"  
**Air Volume** : 780-5700 m<sup>3</sup>/hr. (Standard)  
900-5800 m<sup>3</sup>/hr. (Luxury)

## Misting Air Cooler



This emits misting particles which drop temperature by 3°-8°C through evaporation and increase humidity and purity of air. Misting air cooler is widely used in outdoor occasions such as open square and also used in workshops and factories etc.

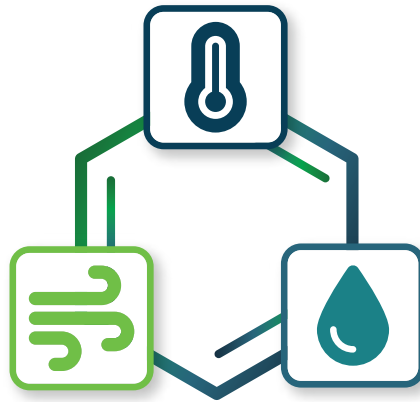
**Air Volume** : 2,100-15,000 m<sup>3</sup>/hr.  
**Effective Area** : 45-112 m<sup>2</sup>

## Ring Blower



It is a dual-use blower for generic or inspiratory gas source blower. It has a small, compact, and quiet structure. It uses a special motor to send dry, oil-free gas. It is mainly used for supporting devices, water treatment, fish farming, dust extraction, gas transmission, etc.

**Air volume** : 20 – 478 m<sup>3</sup>/hr.  
**Air pressure** : 3.9 – 41.9 kPa



**Registered Office:**

Bagbari, 5 No. Ward, Kashimpur,  
Gazipur, Bangladesh



**E-mail:**

hasib@hrg.com.bd  
hrgee08@gmail.com



**Mobile:**

+88 01713066638



**Website:**

www.hrg.com.bd



**Dhaka Office:**

House # 41, Road # 12, Sector # 10, Uttara, Dhaka - 1230